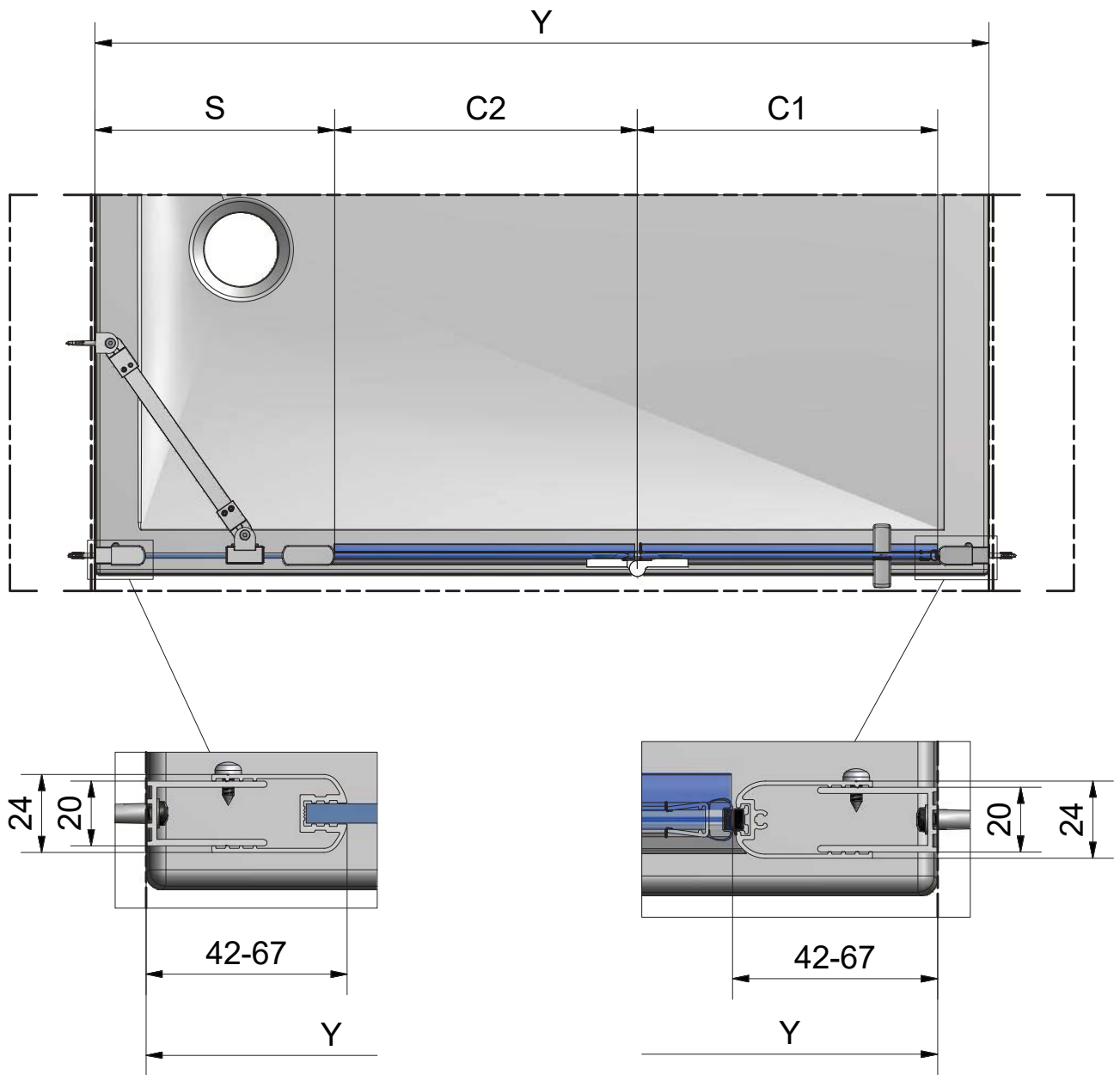


CI RFL/CI RFR



CI RFL/CI RFR				
TYPE	Y (mm)	C1 (mm)	C2 (mm)	S (mm)
1100	1060-1110	370	372	275-300
1200	1160-1210	420	422	275-300
1220	1190-1240	435	437	275-300
1400	1360-1410	420	422	475-500
1600	1560-1610	520	522	475-500